

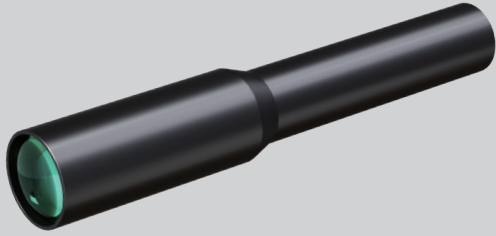
WK 系列

千万像素级 超距精密定位镜头

- 超长工作距达1.4米
抓取精细图像
- 超短镜筒, 便于各种
机台/机械手安装
- 匹配主流相机至1.1"



WK 系列



短小精悍、长工作距、长焦距设计。

1.0X以下任何倍率可以快速定制。

3C组装应用、FPC应用热门定位镜头。

| 型号 | 倍率 (x) | WD (mm) | F# | 支持CCD尺寸 | NA | 物方分辨率 (μm) | 焦距 (mm) | MTF30 (lp/mm) | 畸变 (% max) | 理论景深 (mm) | 长度 (mm) |
|---------------|--------|---------|-----|------------|--------|------------|---------|---------------|------------|-----------|---------|
| WK01-1400-111 | 0.1 | 1400 | 6 | 18.4(1.1") | 0.0083 | 40.3 | 126.3 | 149.8 | 0.2427% | 48.0 | 95.2 |
| WK015-963-111 | 0.15 | 963 | 6.5 | 18.4(1.1") | 0.0115 | 29.1 | 123.8 | 149.0 | 0.2317% | 23.1 | 98.5 |
| WK02-750-111 | 0.2 | 750 | 6.5 | 18.4(1.1") | 0.0154 | 21.8 | 121.7 | 148.0 | 0.2082% | 13.0 | 102.4 |
| WK02-1120-111 | 0.2 | 1120 | 8 | 18.4(1.1") | 0.0125 | 26.8 | 166.5 | 107.0 | 0.4128% | 16.0 | 154.4 |
| WK025-620-111 | 0.25 | 620 | 6.5 | 18.4(1.1") | 0.0192 | 17.4 | 119.5 | 147.8 | 0.2057% | 8.3 | 105.7 |
| WK025-950-111 | 0.25 | 950 | 8 | 18.4(1.1") | 0.0156 | 21.5 | 165.9 | 118.0 | 0.3784% | 10.2 | 163.1 |
| WK03-534-111 | 0.3 | 534 | 7 | 18.4(1.1") | 0.0214 | 15.7 | 117.5 | 139.7 | 0.2027% | 6.2 | 109.2 |
| WK03-824-111 | 0.3 | 824 | 8 | 18.4(1.1") | 0.0188 | 17.9 | 162.4 | 118.0 | 0.3687% | 7.1 | 169.8 |
| WK035-473-111 | 0.35 | 473 | 7 | 18.4(1.1") | 0.0250 | 13.4 | 115.6 | 138.6 | 0.1954% | 4.6 | 113.0 |
| WK035-733-111 | 0.35 | 733 | 8 | 18.4(1.1") | 0.0219 | 15.3 | 158.6 | 117.0 | 0.3681% | 5.2 | 177.1 |
| WK04-425-111 | 0.4 | 425 | 7 | 18.4(1.1") | 0.0286 | 11.7 | 113.4 | 139.3 | 0.2033% | 3.5 | 115.3 |
| WK04-670-111 | 0.4 | 670 | 8 | 18.4(1.1") | 0.0249 | 13.5 | 156.5 | 116.0 | 0.3565% | 4.0 | 184.8 |
| WK045-392-111 | 0.45 | 392 | 7 | 18.4(1.1") | 0.0321 | 10.4 | 112.1 | 135.7 | 0.1846% | 2.8 | 119.8 |
| WK045-610-111 | 0.45 | 610 | 8 | 18.4(1.1") | 0.0281 | 11.9 | 151.7 | 114.5 | 0.3656% | 3.2 | 191.5 |
| WK05-363-111 | 0.5 | 363 | 7.5 | 18.4(1.1") | 0.0333 | 10.1 | 110.2 | 128.0 | 0.1881% | 2.4 | 122.6 |
| WK05-567-111 | 0.5 | 567 | 8 | 18.4(1.1") | 0.0312 | 10.7 | 148.5 | 113.5 | 0.3641% | 2.6 | 198.6 |
| WK055-339-111 | 0.55 | 339 | 7.5 | 18.4(1.1") | 0.0367 | 9.2 | 108.5 | 126.8 | 0.1859% | 2.0 | 126.4 |
| WK055-532-111 | 0.55 | 532 | 8 | 18.4(1.1") | 0.0343 | 9.8 | 145.5 | 107.5 | 0.3631% | 2.1 | 205.8 |
| WK06-316-111 | 0.6 | 316 | 7.5 | 18.4(1.1") | 0.0400 | 8.4 | 106.1 | 128.8 | 0.2040% | 1.7 | 127.8 |
| WK06-503-111 | 0.6 | 503 | 8 | 18.4(1.1") | 0.0374 | 9.0 | 142.7 | 111.0 | 0.3611% | 1.8 | 212.6 |
| WK065-302-111 | 0.65 | 302 | 8 | 18.4(1.1") | 0.0406 | 8.3 | 104.9 | 119.0 | 0.1934% | 1.5 | 131.7 |
| WK065-480-111 | 0.65 | 480 | 8 | 18.4(1.1") | 0.0406 | 8.3 | 141.2 | 108.0 | 0.3495% | 1.5 | 219.7 |
| WK07-287-111 | 0.7 | 287 | 8 | 18.4(1.1") | 0.0438 | 7.7 | 103.2 | 118.6 | 0.1951% | 1.3 | 134.3 |
| WK07-456-111 | 0.7 | 456 | 8 | 18.4(1.1") | 0.0437 | 7.7 | 137.4 | 108.0 | 0.3588% | 1.3 | 227.0 |
| WK075-274-111 | 0.75 | 274 | 8 | 18.4(1.1") | 0.0469 | 7.2 | 101.5 | 118.3 | 0.1986% | 1.1 | 136.8 |
| WK075-438-111 | 0.75 | 438 | 8.5 | 18.4(1.1") | 0.0441 | 7.6 | 134.9 | 106.0 | 0.3586% | 1.2 | 234.3 |
| WK08-259-111 | 0.8 | 259 | 8.5 | 18.4(1.1") | 0.0471 | 7.1 | 99.4 | 114.8 | 0.2180% | 1.1 | 138.7 |
| WK08-421-111 | 0.8 | 421 | 9 | 18.4(1.1") | 0.0444 | 7.6 | 132.7 | 102.0 | 0.3559% | 1.1 | 241.1 |
| WK085-249-111 | 0.85 | 249 | 8.5 | 18.4(1.1") | 0.0500 | 6.7 | 97.9 | 114.9 | 0.2242% | 0.9 | 139.9 |
| WK085-407-111 | 0.85 | 407 | 9 | 18.4(1.1") | 0.0471 | 7.1 | 130.4 | 101.0 | 0.3560% | 1.0 | 248.4 |
| WK09-238-111 | 0.9 | 238 | 8.5 | 18.4(1.1") | 0.0529 | 6.3 | 96.8 | 115.4 | 0.2351% | 0.8 | 142.0 |
| WK09-394-111 | 0.9 | 394 | 9.5 | 18.4(1.1") | 0.0473 | 7.1 | 128.2 | 97.0 | 0.3543% | 0.9 | 255.2 |
| WK095-232-111 | 0.95 | 232 | 9 | 18.4(1.1") | 0.0528 | 6.4 | 95.4 | 108.3 | 0.2292% | 0.8 | 144.7 |
| WK095-382-111 | 0.95 | 382 | 9.5 | 18.4(1.1") | 0.0499 | 6.7 | 126.3 | 95.5 | 0.3527% | 0.8 | 262.6 |
| WK10-221-111 | 1 | 221 | 9 | 18.4(1.1") | 0.0556 | 6.0 | 98.0 | 105.2 | 0.2772% | 0.7 | 144.5 |
| WK10-375-111 | 1 | 375 | 9.5 | 18.4(1.1") | 0.0521 | 6.4 | 125.5 | 94.0 | 0.3441% | 0.8 | 267.5 |